

Refreshed Approach to Support Primary Students with Academic Strengths and Talents

Parent Engagement 2026



Outline

What Matters Most

- Voices from Parents
- Our Hopes for Our Children

Why We're Changing

- What does Research Tell Us about Developing Children's Strengths and Talents?
- Growing Your Child's Talents

What's Changing

- The Refreshed Approach to Support Primary Students with Academic strengths and talents
- How will the Changes Impact Your Academically Strong and Talented Child?

Making It Work

- Partnering Parents to Nurture Children's Strengths

Voices from Parents

In reality, a lot of the stress comes from us as parents.

My utmost goal is to preserve his love for learning.

Will my child have opportunities to connect with like-minded peers?

to ensure that our child receives the appropriate support and opportunities

Would every MOE primary school be using the same ways of teaching, expectations and motivation?

how best to plan my child's academic path

Our Hope for Our Children

Maximising Potential:

Children should be stretched to grow and reach their potential.

Fair Opportunities:

Every child should have the chance to discover their strengths.

Well-being:

Children should grow with confidence and joy.

What Does Research Tell Us About Developing Children's Academic Strengths & Talents?

Guiding Principles



Children's abilities grow at different speeds over time.

Every child develops their abilities in their own way. Some children show their talents early, others later.



Children have different talents

Talents may appear in language, maths or science (or non-academic areas).



Opportunities help talents grow

Experiences, encouragement and challenge help children discover their potential.



Psychosocial skills matter

Children grow best when they believe in themselves and work well with others.



What it Means in Practice

- **Reduce stigma and labelling** e.g. 'gifted' or 'not gifted'. Discovering children's potential is an **ongoing process** that allows them time **to develop at their own pace**.
- **Children can excel in some subjects while receiving support in others.**
- **Appropriate challenges and diverse experiences** help children find out what they are good at, and get better at it.
- Help children **build confidence, learn to face setbacks and never give up, and work well with others.**

Growing Your Child's Talents

- Every child has a different strength; they should not be expected to be strong in all areas.
- Your child's talents will grow throughout their entire life, with the right support – accelerating the process may cause more harm than good.
- Support your child's natural development - nurture his or her joy in learning and intrinsic motivation.
- Primary schools offer opportunities for discovery of strengths, while secondary schools offer multiple pathways to develop different talents and interests, as students' strengths and talents become more obvious.



Life Course Talent Development Vision: From Discovery to Actualisation

Stage 1: Primary (Discovery & Foundation)

Focus: Broad exploration across domains, nurturing early interests, and building foundational cognitive skills.

Stage 2: Secondary (Specialisation & Cognitive Stretch)

Focus: Transition to focused pathways through the Integrated Programme (IP), specialised independent schools, and tailored MOE programmes.

Stage 3: Post-Secondary (Actualisation)

Focus: Achieving deep domain specialisation via research opportunities, innovation, supported by industry attachments and scholarships.

Refreshed Approach to Support Primary Students with Academic Strengths & Talents



Holiday Modules

Students can access interdisciplinary and abridged modules during the school holidays at the centres

Identification & Selection



Standardised one-stage identification exercise at P3
Focus on English and Math



Ongoing identification at upper primary years using multiple sources of information like teacher observations and students' work



Remain in own school instead of transferring to a GEP school

Within School

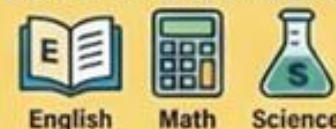
School-Based Provisions



In-class extensions and after-school enrichment programmes

Outside School

Centre-Based Advanced Modules



English Math Science

Specialised weekly session in one subject of strength

School-Based



10% of Level Cohort



Taught by school teachers



During/after school

Centre-Based



>1% E/M/S talents



2-hour weekly sessions



At 15 designated centres taught by specially trained teachers

The Refreshed Approach: Key Changes

Identification

- Standardised **one-stage identification exercise** in English and Maths in P3 Term 3*; Students with one or more domain strengths will be identified.
- Complemented by **other sources of information**, e.g. teacher observations, student daily work and learning attitude/dispositions (e.g. curiosity, inquisitiveness)
- **More junctures** for students to be identified at the end of each semester at P4 and P5

No School Transfer

- Students **remain in their own school** and be developed – no need to transfer to GEP centre. Allows them to nurture friendship bonds and maintain their sense of belonging.
- Some students will **travel to a designated centre** near their school once a week for centre-based advanced modules.

Customised Development by Domain Strength

- Variety of **school-based provisions**, including within-class and after-school activities for more students
- **Centre-based advanced modules** (English, Maths, Science, interdisciplinary) for students who are **assessed to benefit from further stretch**; once a week after school, and during school holidays

*Science is not tested as students only start learning the subject at P3.

Centre-Based Advanced Modules for Primary Students with Academic Strengths and Talents

A Different Approach to Learning



Inquiry-Based Exploration

Focus on cultivating curiosity, creativity and critical thinking through rigorous academic inquiry



Holistic Development

Nurture advanced learners' holistic growth by developing psychosocial skills that sustain motivation, support self-regulation and foster perseverance



Explicitly De-linked from PSLE

Content is designed to stretch students with academic strengths and talents, not for national exam preparation

Subject Mastery & Peer Collaboration



Domain-Specific Provisions

Advanced modules in English, Mathematics, and Science



Interdisciplinary Modules

Modules that involve integration of different subjects to engage students in problem-based real-world applications



Cross-School Peer Learning

Like-minded, talented students from various schools form a community of advanced learners that fosters collaboration



How will the Changes Impact Your Academically Talented Child?

- Your child will benefit from staying in his/her current school environment, with familiar classmates and teachers.
- Your child can focus on developing his/her talent whilst still receiving support in other subjects if he/she needs more help.
- Your child will have access to school-based provisions in different subjects based on his/her strength and interest.
- If your child is identified to benefit from further stretch, he/she will experience learning outside the national curriculum at a designated centre.

Partnering Parents to Support Children's Strengths

At home, parents can help their children grow their strengths by:

Encouraging curiosity and discovery

Let your child explore his/her interests and ask questions.

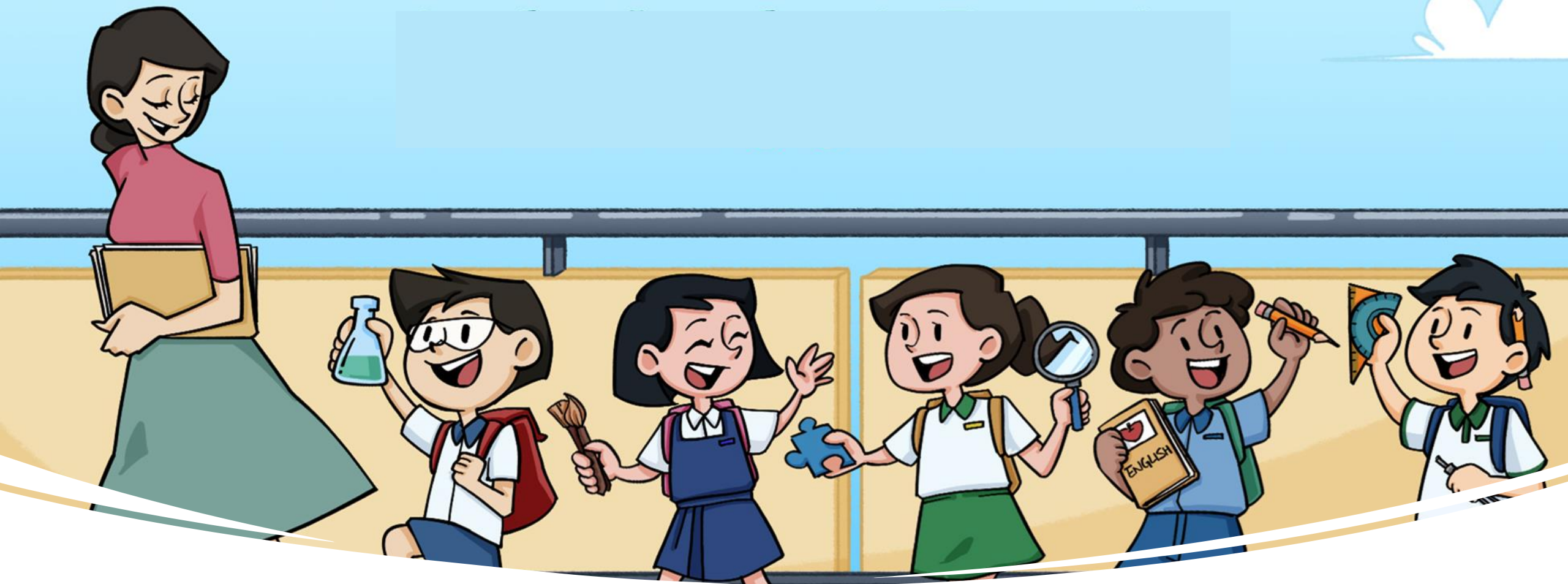
Nurturing interests

Support activities and topics that your child enjoys learning about, e.g. going outdoors, visiting Science Centre.

Supporting learning without pressure

Focus on growth and discovery rather than pushing for performance.





Thank you.